

CAPITAL PROJECTS NEEDS

With an aging facility of 130,000 square feet, built in three different phases over a 50-year period, we have some important maintenance issues to address to continue serving safely and effectively. Planning ahead for improvements and the eventual repair and replacement of crucial systems will help us fulfill our mission more effectively.

- **Fire safety and alarm system upgrade - \$40,000**

The outdated system is susceptible to failure and requires regular repairs. New technology and designs will ensure proper operation and safety for years to come.

- **Sanctuary and facility improvements - \$200,000**

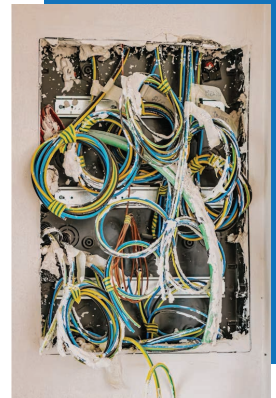
Updates to the sanctuary and lobby spaces will provide more creative, inviting, and hospitable places for people to worship and fellowship together. Updates could include new tech equipment, upgraded lighting, thermal pane windows, paint, carpet, and furnishings.

- **Internet rewiring with fiber optic cable - \$60,000**

Updating Pearce's older technology and infrastructure will enable us to replace our obsolete phone system, enhance internet capability and internal networking, and enable us to add a security system.

- **Roof replacement - \$200,000** The roofs over the Family Life Center and other areas of the 2001 expansion have reached maximum life expectancy.

- **Pearce 4 Kids Playground - \$50,000** Our outdoor play space has become outdated. New equipment designs are safer and more appropriate for students with sensory needs.



Capital Project Total: \$550,000